



CONTRA COSTA  
transportation  
authority

SOUTHWEST AREA TRANSPORTATION COMMITTEE

# Countywide Emergency Evacuation Plan

John Hoang, Director, Planning



# Countywide Emergency Evacuation Plan

- Caltrans Sustainable Transportation Planning Grant Program FY24-25
    - Climate Adaptation
  - Grant Specific Objectives and Benefits
    - Benefits to public health, natural ecosystems, air quality, social equity, the economy, or reduction in GHG emissions
  - Grant Specific Objectives, Partnership and stakeholders
  - Alignments with other plans and State goals
  - Cost
    - Grant Amount \$1,490,000
    - Match \$207,900
    - Total \$1,697,900
-

# Countywide Emergency Evacuation Plan

- Includes 19 Cities/Towns and Unincorporated County
    - With focus on vulnerable communities
    - Neighborhoods that lack network redundancy during evacuation scenarios
    - Help agencies determine how to improve the evacuation network during those events
  - Builds on the multi-jurisdictional Local Hazard Mitigation Plan (multi-jurisdictional evacuation using routes that may span several jurisdictions)
    - Tie-in to regional and subregional transportation planning
  - Plan addresses two deficiencies
    - Unfunded mandates requiring local governments to plan for emergency evacuation
      - SB 99: Conduct Local-Level Evacuation Compliance Assessment
      - AB 747: Evaluate High-Level Evacuation Route Capacity, Safety, and Viability
    - Unique regional economic and climate-related issues that affect the most vulnerable communities and their transportation system
-

# Countywide Emergency Evacuation Plan

- Hazards/Climate-induced Effects
    - Sea Level Rise, Wildfire Risks, Levee failure, Landslides
    - Other Natural Hazards: Earthquakes
    - Manmade: Refinery Accidents
  - Expected to Strain the Transportation network and communities throughout the County
  - Efforts already undertaken by agencies to look at planning for resiliency.
    - Lafayette and Orinda completed locally-focused planning efforts
  - Underserved communities
    - Richmond, El Cerrito San Pablo, Concord, Pittsburg, Antioch, Unincorporated (North Richmond Rodeo, Bay Point)
    - Equity Priority Communities (EPCs) [based on race, low-income, English proficiency, seniors,...]
    - MTC identifies 48 Census tracts in CC as EPCs (noted above)
    - Engagement
-

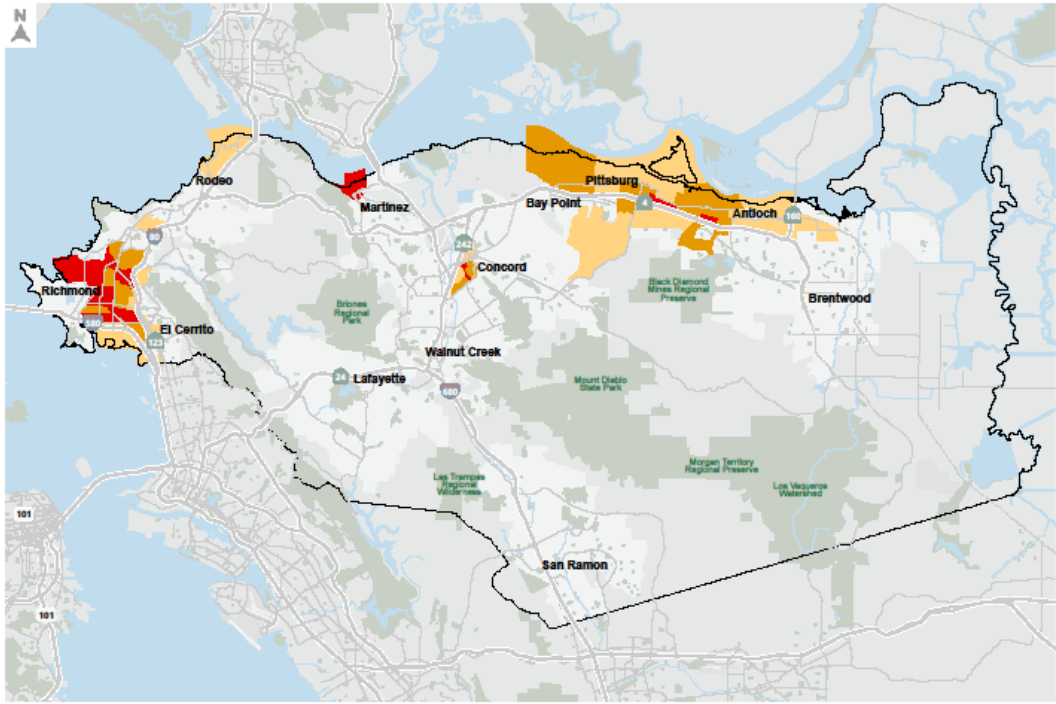
# Countywide Emergency Evacuation Plan

- Assessment of five sub-regions and evaluation of up to six emergency events per region using and interfacing with land use and roadway network data in the CCTA model. Based on the results of the assessment the Plan will include:
    - Project Prioritization: Prioritized projects in the identified vulnerable areas using a ranking criterion agreed by the Project's TAC
    - Cost Estimates/Project constraints: Cost estimates and key constraints of 20 top-ranked of projects with conceptual project designs.
    - Funding strategies and documentation: Potential funding strategies for the projects.
-

# Countywide Emergency Evacuation Plan

- Scope of Work
    - Task 1: Technical Advisory Committee
    - Task 2: Stakeholder and Public Outreach
    - Task 3: Network Resilience Assessment
      - Outreach Emergency Responders
      - Congestion Identification
      - Network Analysis
      - Emergency Response Time Assessment
      - AB 747/AB 1409 Assessment
      - Firesafe Accessibility Assessment
    - Task 4: Additional Infrastructure Resilience Assessment
      - Network Electrification Resiliency
      - Transit Shelter Evaluation
      - Vehicle Redundancy Assessment
-

# Equity Priority Communities



**MTC Equity Priority Community Classification**  
High Higher Highest

Exhibit A  
**MTC Equity Priority Communities**